

GROUP U SPECIAL DRILLING MACHINE

Simple and quick operation | Improve processing efficiency | Save labor | Reduce cost



Characteristics and advantages of machine tools

The machine tool adopts CNC system control, vertical multi axis U-drill drilling, and simple and fast operation. The process of drilling multiple holes evenly distributed on the flange at the same time can be achieved with one clamping, and the processing speed is fast, efficient, and labor-saving.

1. The machine tool is suitable for processing flange products above DN150, with high processing efficiency, reduced manual processing, high uniformity of dimensions, and easy operation.

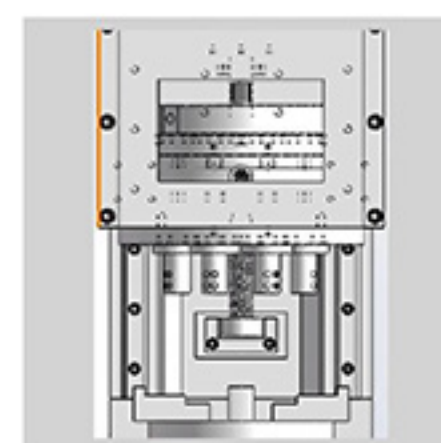
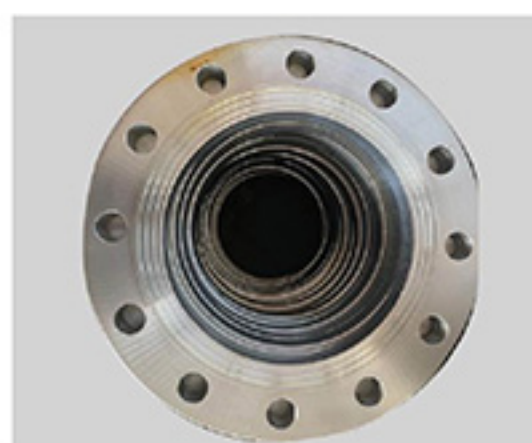
2. The machine tool uses a U-drill for drilling, with high speed and high feed rate, resulting in high machining efficiency. During the machining process, the CNC system of the machine tool controls the automatic feed rate.

3. The drilling head adopts a multi axis structure, and the holes on the flange can be processed simultaneously at once. The efficiency of processing the same type of flange is twice that of general equipment (hole count X1.15), and one person can operate at least 3 specialized machines.

4. The uniformity of machining dimensions is high, and this machine tool is completely controlled by a CNC system. Only one tool alignment is needed to repeatedly machine the same type of workpiece, thereby improving the uniformity of dimensions.

5. Easy to operate, this special machine is completely controlled by a CNC system. Experienced CNC operators or those with a foundation in machine tool processing can learn it immediately.

Processed Products



SPECIFICATIONS

Project 项目	Machine tool specification 机床规格	YCQUZ200	YCQUZ300
Technical specifications 技术规格	Maximum workpiece diameter (mm) 最大工件直径 (mm)	φ 340	φ 460
	Minmum workpiece diameter (mm) 最小工件直径 (mm)	φ 280	φ 390
	Maximum borehole diameter (mm) 最大钻孔直径 (mm)	8- φ 23	12- φ 26
	Feed shaft stroke(mm) 进给轴行程 (mm)	300	300
Machining precision 加工精度	Position(mm) 位置度(mm)	φ 0.4	φ 0.4
	Hole tolerance 孔径公差	+0.2/0	+0.2/0
	Roughness 粗糙度	Ra3.2	Ra3.2
Spindle drive 主轴传动	Transmit 传动	Synchronous belt 同步带	Synchronous belt 同步带
	Spindle motor range (r/min) 主轴转速范围 (r/min)	970	970
	Spindle motor model 主轴电机型号	YE2-160L-6B5	YE2-180L-6B5
	Spindle motor 主轴电机	11KW	15KW
Numerical control system (optional) 数控控制系统 (选配)	Nanjing Huaxing CNC, Guangzhou CNC, and Keyuan CNC 南京华兴数控、广州数控、科源数控		
Feed form 进给形式	Actuating motor 伺服电机	10N.m	15N.m
Machine bedoutersha (Full protection) 机床外形 (全防护)	Machine tool host size (length x width x height)(mm) 机床主机尺寸 (长x宽x高mm)	2300X1860X2450	2300X1860X2450